

Automatic pressure unit

Applications

Assembled on a pump for automatic water supply and reduce the water hammer. Free of maintenance without preload of air.

Specifications

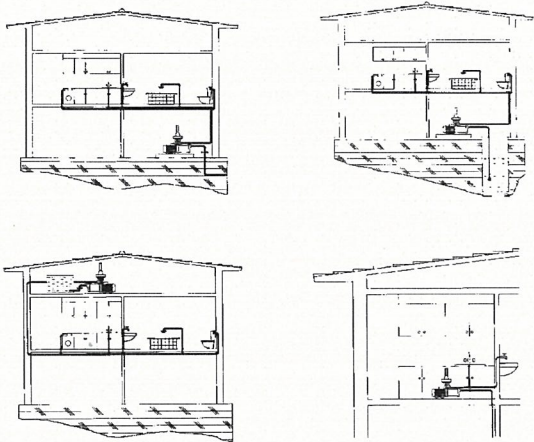
Quiet running operation. Non return valve built-in, pressure gauge, pressure switch and electronic control with dry running function integrated and manual reset button.

Materials

Plastic components in polypropylene. Internal membrane in natural rubber. Screws in stainless steel AISI 304

Limitations

Starting pressure:
Waterdrive 15: 1,5 bar.
Waterdrive 25: 2,4 bar.



Technical features

Model	I [A]	Hz	Protection	Max. Pressure [bar]	Max. Static Pressure	Starting Pressure	Stopping Pressure	Diferential Pressure [kg/cm ²]	Max. Flow [m ³ /h]	Max. Building Height [m]	Ø Inlet connection	Ø Outlet connection	1~230 V
													Code
Waterdrive 15	10	50/60	IP 54	7,5	10	1,5		≥ 0,7	8	12	1" macho	1" hembra	179459
Waterdrive 25	10	50/60	IP 54	7,5	10	2,4	Max. given by the pump	≥ 0,7	8	20	1" macho	1" hembra	188650

Dimensions and weights

Model	A	B	Kg
Waterdrive	185	254	0,9

