

ACCESS PUMP STARTER RANGE

Description of range

The Access pump starter range offer simple and effective solutions for pump control. See relevant section for specific instructions.

ESBI – PUMP ISOLATOR SWITCH

The switch box provides a safe method of isolating the 230vac supply to the pump and can be used as manual on/off switch if required. The switch is rated at 25amps. The box should be mounted close to the pump position. Mount the box using the external fixing lugs only. Turn the rotary switch to the OFF position, unscrew the two phillips headed retaining screws and remove the cover.

The box has 20mm knockouts for cable or conduit glands.

Use appropriately rated cable, Connections are made as follows:

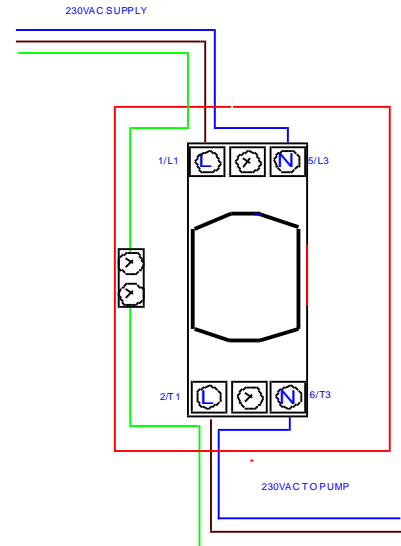
230vac mains supply (LIVE) in: connect to **1/L1**.

230vac mains supply (NEUTRAL) in: connect to **5/L3**.

230vac pump supply (LIVE) out: connect to **2/T1**.

230vac pump supply (NEUTRAL) out: connect to **6/T3**.

Earth connections: connect all earth wires to the separate earth terminal.



ESB1PR - PUMP RELAY BOX

The pump relay box is designed to provide a simple method of starting a pump via controller or any 24vac supply. The relay box can be used for pumps with a maximum Full Load Current (FLC) of 12amps. (An appropriate method of isolating the box for emergency and maintenance purposes should be provided).

Box mounting

The box should be mounted using the external fixing lugs only.

Wiring the relay

The relay box is opened by undoing the two Phillips headed retaining screws. The box has rubber sealed entry/exit holes, after piercing the rubber simply push cable through or if a higher level of IP protection is required fit 20mm cable/conduit glands. The relay/base is secured to the DIN rail with a spring clip.

Use appropriately rated cable, connections are made as follows:

230vac mains supply (LIVE) in: connect to **6(34)**.

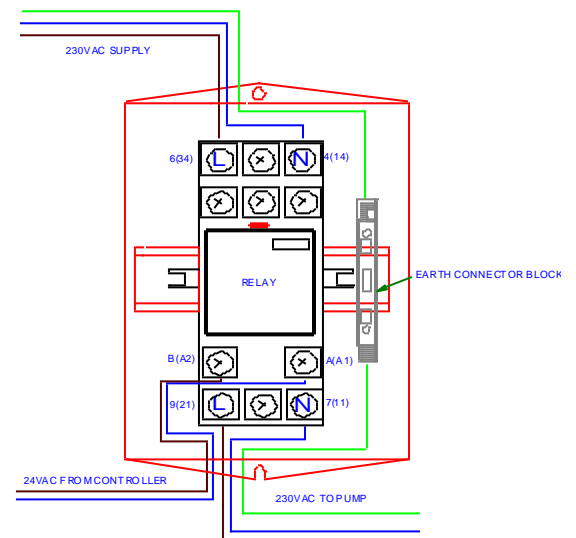
230vac mains supply (NEUTRAL) in: connect to **4(14)**.

230vac pump supply (LIVE) out: connect to **9(31)**.

230vac pump supply (NEUTRAL) out: connect to **7(11)**.

Earth connections: connect to the green/yellow terminal.

Controller input: pump/master connect to **A(A1)** and **B(A2)**.



ESB1/3HD - PUMP STARTER BOX

The heavy duty starter is designed for any pump up to 16amp FLC. It contains a 230vac contactor, 24ac relay and thermal overload. The starter is available in single and three phase models.

Control Options

Controller input

The starter is configured to enable the operation of a pump from an irrigation controller or 24vac supply.

Pressure/Float Switch input

The starter is fitted with an internal 24vac transformer and is configured to accept a volt free input from a float switch or pressure switch.

Pump Isolator

The yellow/red rotary switch isolates mains 230/415vac supply to the starter internal components. The switch is lockable for emergency and maintenance purposes.

Mounting

The starter box should be mounted close to the pump using the external fixing brackets.

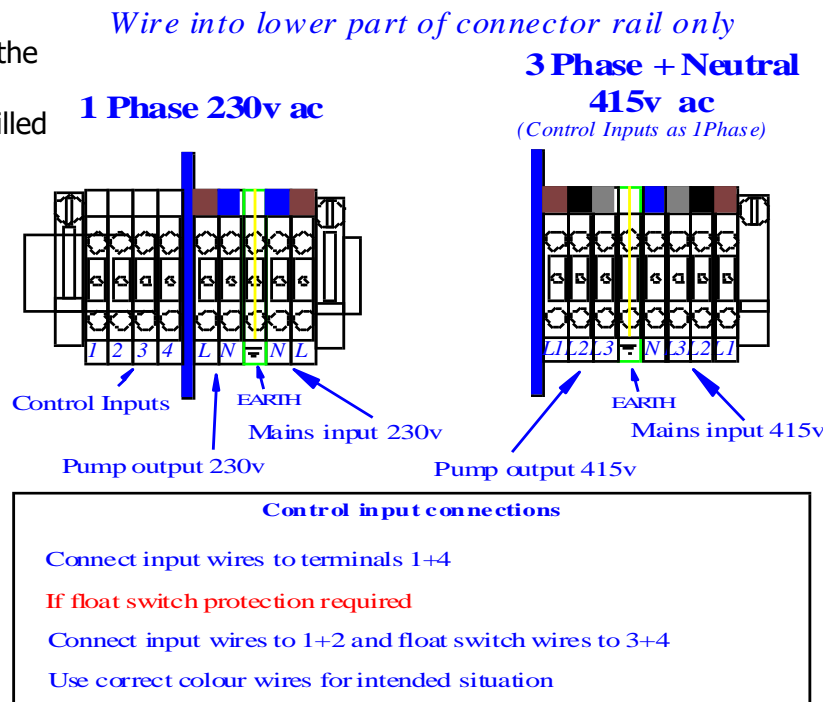
Wiring

The starter box is opened by undoing the retaining screws.

The unit has three 20mm holes pre-drilled into the base for cable/conduit adaptors.

All user connections are made into a terminal rail, use appropriately rated cable and wire as per specific connection detail.

If the starter box is to be used in an outdoor enclosure, the electrical connection point should be fully waterproof. The controller casing should also be protected from the elements. Ensure that any electrical work is carried out by a competent person.



ACCESS Irrigation Ltd, Crick, NORTHAMPTON NN6 7XS

Tel: 01788 823811 Fax: 01788 824256

web: www.access-irrigation.co.uk e-mail: sales@access-irrigation.co.uk